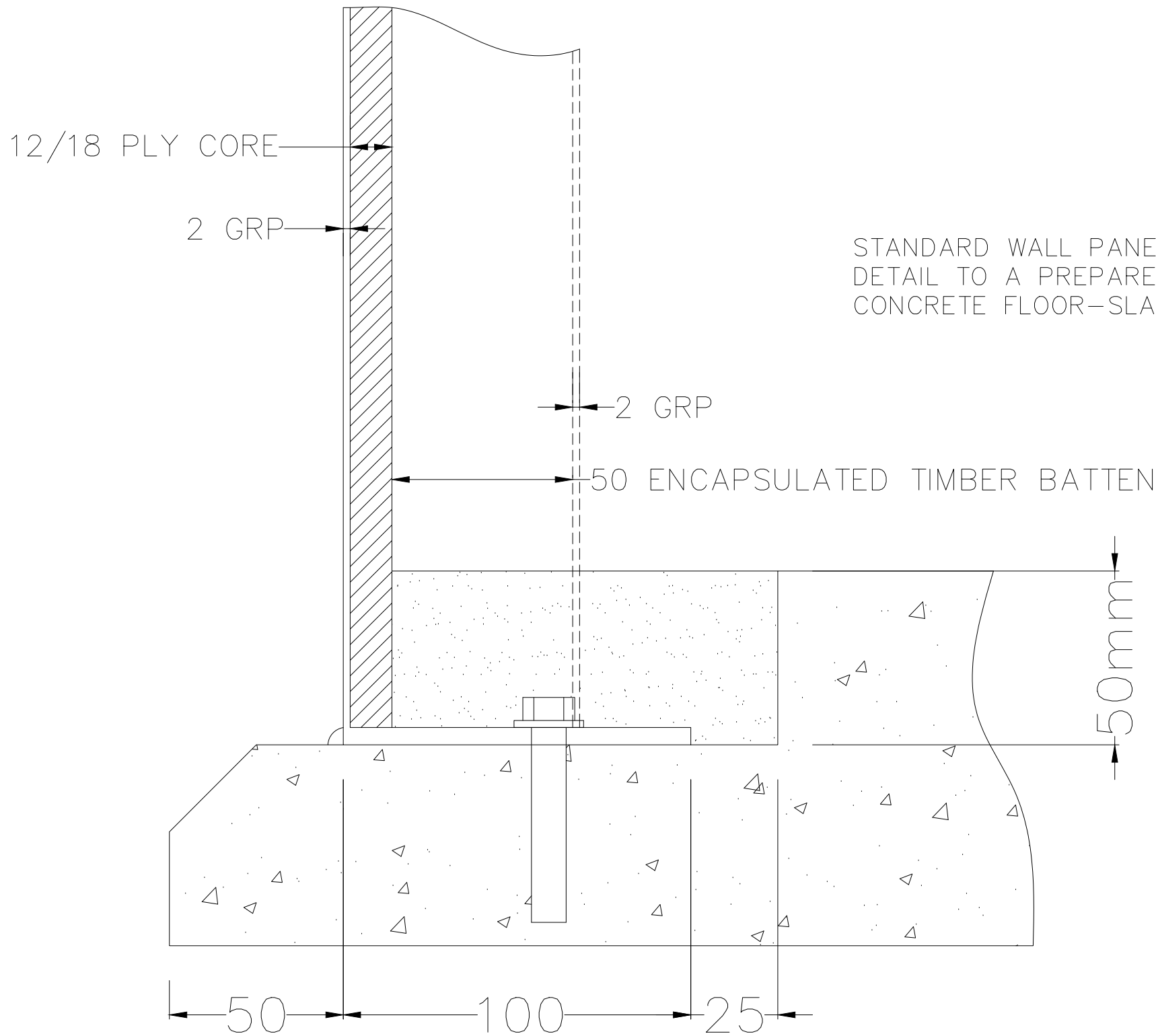


100mm BASE DETAIL
RECOMMENDED



STANDARD WALL PANEL BASE FIXING
DETAIL TO A PREPARED REBATED
CONCRETE FLOOR-SLAB.

CONSTRUCTION:	GRP/18mm PLY/GRP
EXTERNAL FINISH:	SMOOTH GEL
EXTERNAL COLOUR REF:	TBA
INTERNAL FINISH:	MATT GRP
INTERNAL COLOUR:	WHITE
BASE FLANGE:	100mm
INSTALLATION TYPE:	READY BUILT

PARTS LIST / LEGEND:	QTY:
----------------------	------

PRODUCTION NOTES:

ESTIMATED KIOSK WEIGHT:		N/A
ESTIMATED ROOF WEIGHT:		N/A
-	FIRST ISSUE	09/04/25
REV:	DETAILS OF REVISION	DATE:

THIS DRAWING AND DESIGN IS THE PROPERTY OF INDUSTRIAL GRP AND WITHOUT THE WRITTEN CONSENT OF INDUSTRIAL GRP LTD MAY NOT BE COPIED IN WHOLE OR IN PART OR COMMUNICATED IN ANY FORM TO A THIRD PARTY.

INDUSTRIAL GRP
HEAD OFFICE TEL: 01269 845 800
WEBSITE: WWW.INDUSTRIALGRP.CO.UK
BLOCK 2 UNIT C, CAPEL HENDRE INDUSTRIAL ESTATE, AMMANFORD, CARMARTHENSHIRE, SA18 3SJ

TITLE:			
CLIENT:			
DRAWING REF:		STEPPED BASE DETAIL	
DATE: 09/04/25	DRAWN BY: RO	CHECKED BY: JS	REV: